

KANSAS EXPLORERS CLUB MEMBERSHIP FORM

New member _____; Renewal _____

Individual membership is \$18.61

Family membership is \$30

(Family membership means that every family member receives the member rate for explorer functions and their own membership card. A family is anyone who lives under the same roof.)

Member(s): _____

Address _____

City _____

State _____ Zip _____

E-mail _____

Phone _____

This is a gift from (name & address):

Visa or MC # _____

_____ Exp. Date _____

Prefer newsletter in Print _____ Online _____

Send check and form to:

Kansas Explorers Club, 978 Arapaho Rd., Inman,
KS 67546 or join online at explorekansas.org
(membership fee is tax deductible)

*The Kansas Explorers Club is a project of the
non-profit Kansas Sampler Foundation.*

KANSAS SAMPLER FOUNDATION

Director, Marci Penner

Assistant Director, WenDee Rowe LaPlant

978 Arapaho Road, Inman, KS 67546

620.585.2374

marci@explorekansas.org ~ wendee@kansassampler.org

www.explorekansas.org

MEMBERSHIP BENEFITS

EXPLORER NEWSLETTER

You will receive an eight-page newsletter six times a year. It is full of information about places you rarely hear about. It will tell you where to find a tree full of shoes, a ghost town with character, or cafes with made-from-scratch food.

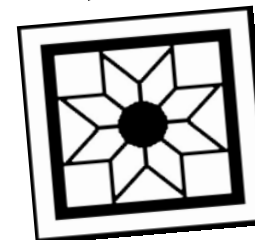
You'll receive your very own explorer number, an annual membership card, and you'll be shown the secret greeting ritual.

REASONS TO JOIN

- Learn about unique places to take friends and relatives!
- Stay in touch with the past and present story of Kansas.
- Find out fascinating tidbits about Kansas that will perk up any conversation!
- Enjoy the journey, even if just from your armchair!
- Learn how to make a difference in a small town.

The Kansas Explorers Club is created to inspire, educate, and encourage the exploration and appreciation of Kansas...

See Kansas with New Eyes



Kansas Explorers Club

There is so much to see and do in the state but how do you find out where things are and when they're open? When you join the club you'll receive an 8-page newsletter that is filled with tons of ideas about what, where, and how to explore the nooks and crannies of the state!

 **Join
the
Journey!**

www.explorekansas.org

► The EXPLORER!

What is the Kansas Explorers Club?

We're fun --- and the cause is contagious. You see, we're about more than just traveling the state. You might call us activists, a group of people that aren't afraid to say that Kansas has lots to see and do. While we're out discovering those places we eat in local cafes and feel good about spending money in locally-owned businesses. Visiting with the locals is key because it bonds you to the experience. Exploring is not so much about being at the destination but enjoying the journey.

JOIN US!

THE EIGHT RURAL CULTURE ELEMENTS

are used as a guide to help explorers see Kansas with new eyes. The elements are:

- ARCHITECTURE
- ART
- COMMERCE
- CUISINE
- CUSTOMS
- GEOGRAPHY
- HISTORY
- PEOPLE



Explorers having fun discovering "Rock City" near Minneapolis, KS

You'll find a story about them in every town!



► ARCHITECTURE:

If the walls could talk...

- The Gothic-Style Nazareth Motherhouse, 13th and Washington, is a mammoth architectural landmark in **Concordia**. Tours are given by appointment, 785.243.2113.

► WONDROUS ART

- Post Office Section Art can be seen at 22 post offices in Kansas. One is in the **Kingman** post office. It depicts a cattlemen's picnic painted by Jessie S. Wilbur, 1942.



► COMMERCE: We're all Business!

- Murphy's Mercantile in downtown **Stark** (near Chanute) sells groceries, dry goods, and light lunch in a nostalgic atmosphere! 620.754.3222.
- The story of the 1920s and 1930s oil boom is well told at the Oil Patch Museum in **Russell**. 785.483.6640.

► TESTING THE KANSAS CUISINE

- Bichelmeyer's Steakhouse, 427 E. 4th, in **Tonganoxie** is in a converted two-story, red-brick 1890 mercantile. Great backdrop for prime rib with special seasonings! 913.369.2337.



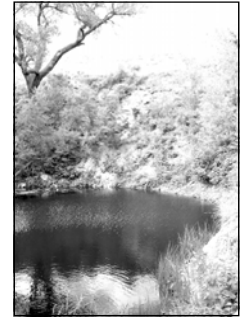
► CUSTOMS: The way we are



- A tree with more than 200 shoes nailed to it is located in Nemaha County. From **Wetmore** go 1 mile west on K-90, 5 miles north on W Road, then 1 mi. west on 80th.

► GEOGRAPHY: It's diverse in Kansas!

- St. Jacob's Well is a funnel-shaped pond 84-feet in diameter and it has never been known to go dry. It has attracted visitors back to prehistoric times. It's within the Big Basin Prairie Preserve 11 miles west of **Ashland**, then 2 1/4 miles north on U.S. 283 from the U.S. 283 and U.S. 160 junction.



► HISTORY:

Be there, right where it happened



- **Fort Larned National Historic Site** - The fort visitor center provides a great overview of the purpose of the fort (guardian of the Santa Fe Trail from 1859 to 1878). The placement and display of artifacts and props in the original buildings bring it all to life. Six miles west of **Larned** on K-156.

► IT'S ALL ABOUT PEOPLE



- Between 1917 and 1936 explorers Martin & Osa Johnson traveled to the exotic realms of Africa and Borneo. The Martin & Osa Johnson Safari Museum in **Chanute**, 111. N. Lincoln, documents their adventures. 620.431.2730.