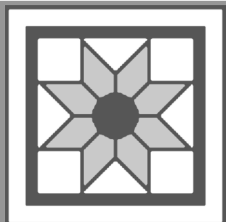


# THE EXPLORER



The Kansas Explorers Club is created to inspire, educate, and encourage the exploration and appreciation of Kansas...and to have fun doing it!  
Explorers are urged to look for the rural culture elements in each town — architecture, art, commerce, cuisine, customs, geography, history, and people.

Kansas Sampler Foundation, 978 Arapaho Rd., Inman, KS 67546  
620.585.2374 [kansassampler.org](http://kansassampler.org) [marci@kansassampler.org](mailto:marci@kansassampler.org) / [wendee@kansassampler.org](mailto:wendee@kansassampler.org)

## KANSAS IS 152!

### 105 DESTINATION PLACES IN 105 COUNTIES

In honor of Kansas Day, this will be an all-across-Kansas newsletter! If your quest is to go to every Kansas county, here is a starter kit of places that will help you see the broad story of who we are and what we look like.

**Allen County:** Humboldt's interpretive signage helps us realize Kansas's connection to the Civil War. Start with the Civil War monument in the town square.



**Anderson County:** Start at the **Garnett** historic depot (8th and Main) and enjoy woodlands, prairie, lakes, and wildlife on the Prairie Spirit Biking and Hiking Trail.

**Atchison County:** The open-air Lewis and Clark Pavilion at Commercial and River Road in **Atchison** takes a visitor back to the history of our early explorers.

**Barber County:** Flower Pot Mound is one of the high-lights on the Gyp Hills scenic drive. Start about 3 miles west of **Medicine Lodge** on U.S. 160, then south. Follow the small green signs.

**Barton County:** From the top of the **Pawnee Rock** state historic site imagine a train of covered wagons headed to Santa Fe. Find it a half mile north of U.S. 56 on Centre.

**Bourbon County:** **Fort Scott** National Cemetery provides a tranquil setting for Union soldiers, U.S. Colored troops, Native American soldiers, and buffalo soldiers.



## KANSAS DAY WAS JANUARY 29

It was a contentious time. The whole country was watching. Would Kansas come into the union as a slave state or free state? The debates between pro-slavery and antislavery forces at Constitution Hall in **Lecompton** were animated and ferocious. On January 29, 1861 President James Buchanan signed into law that Kansas would become the 34th state. We entered as a free state.

Learn more at Constitution Hall, 319 Elmore, in Lecompton. Open Wednesday-Saturday 9 a.m.-5 p.m.; Sunday 1-5 p.m. [kshs.org/constitution\\_hall](http://kshs.org/constitution_hall)

## A TIP ON DIGGING IN AS A KANSAS EXPLORER



### Consider these two scenarios:

1) You like going out for a hot breakfast. Though the pancakes are good at your favorite locally-owned cafe, you're craving something more. But what is it?

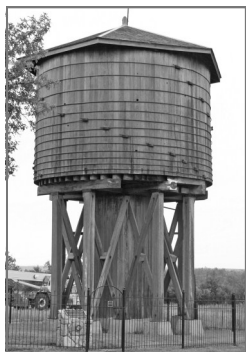
*Aha, maybe you want deeper Explorer satisfaction.*

2) What if you make it your quest to have a pancake at every locally-owned restaurant in a 60-mile radius? Not only would you fulfill your desire to go out for breakfast but you'd get to observe different local rituals, taste a variety of pancakes, and learn who serves warm syrup and real butter. You can bet everyone will stare at you when you enter the restaurant. Just tell them you're on a Pancake Quest and lots of good conversations and laughs will follow.

Choosing a quest and having a specific reason to cover a certain geographic area will help you see Kansas with new eyes. It will get you to parts of the state where you might not have otherwise ventured. Have fun!

## 105 Places in 105 Counties

**Brown County:** New wind farms are popping up all over. See the long row of old-fashioned windmills at Brown County Ag Museum, 301 E. Iowa, **Hiawatha**.



**Butler County:** The 1870s wooden water tower in **Beaumont** reminds us of the steam engine days and loading cattle on the train to ship east.

**Chase County:** Whether you take the tram ride into the prairie to learn about the grasses, wildflowers, and buffalo or hike to the stone school, soak in this rare ecosystem at the Tallgrass Prairie National Preserve. Located two miles north of K-177 and U.S. 50 junction, west of **Strong City**.

**Chautauqua County:** Walk the boardwalk at Hollow Park, Main and Sherman, in **Sedan**. It parallels a creek in a beautifully landscaped nook and cranny.

**Cherokee County:** If you haven't grown up in southeast Kansas, you'll want to learn about mining in Kansas. Start at Big Brutus and it's museum. Five miles west on K-102 from the K-7 junction near **Scammon**.



**Cheyenne County:** Head north from the Benton and Washington intersection in **St. Francis**, cross the Republican River and turn right at the first fork. About 12 miles from the intersection you'll see one of the best views of the Arikaree Breaks rugged landscape and canyons. Kansas is not flat!

**Clark County:** The expanse of the mixed-grass Big Basin Prairie Preserve (the biggest sink hole in the state) is plenty to soak in but continue the primitive driveway to St. Jacob's Well and find one of the best contemplative spots in the state. Eleven miles west of **Ashland**, then 2 3/4 miles north on U.S. 283 from the U.S. 160 and U.S. 283 junction.



**Clay County:** Appreciate the only remaining glebe in the United States 4 miles west of **Wakefield** on K-82. A glebe is a small tract of land traditionally given to English clergy to farm to help provide a living.



**Cloud County:** Walk around the 650-seat theatre and notice the gold decorative molding and lights around the proscenium arch, the brass rails in front of the box seats, and forest green curtains behind them. This 1907 Brown Grand Theatre is a crown jewel of **Concordia**.

**Coffey County:** From Coffey County Lake (2 miles north on U.S. 75, 1 mile east of Burlington) you can view the Wolf Creek nuclear plant, the only one in the state.

**Comanche County:** Take the scenic drive across the southern portion of the county. It might be easiest to start at **Hardtner** in Barber County and head west to **Buttermilk** (south of **Coldwater**) in Comanche County. Be prepared to get lost, or even find yourself in Oklahoma. The scenery is unlike any other part of Kansas.

**Cowley County:** Inspiration Point at Camp Horizon near **Arkansas City** provides a breathtaking overlook view of the Arkansas River and valley a mile below. Follow Madison (Co. Road 12) out of Ark City 3 1/2 miles. At the fork, turn right onto 296th (Co. Road 6) for 2 1/2 miles. Turn right at the Horizon United Methodist Center sign, then 1 mile south. Walk south between the cabins for about 100 yards.

### Crawford County:

Strip Pit Alley is a drive showing vestiges of old coal-mining camps and the strip mining pits now restored to beautiful water and wooded environments. At K-47 and U.S. 69, 1 mile south of **Franklin**, go east 4 1/2 miles on 620 Avenue to the Missouri line, then 3 miles north to **Mulberry**, continue 6 miles north to **Arcadia**, and 4 miles back west to U.S. 69.



**Decatur County:** Come into **Oberlin** on U.S. 83 and you'll get an "ah" as the rural landscape changes into a thriving city below in the valley.

**Dickinson County:** President Dwight Eisenhower was proud to be from **Abilene**. Feel the power of his presence by standing beside his statue between the presidential library and museum, 4th and Buckeye.

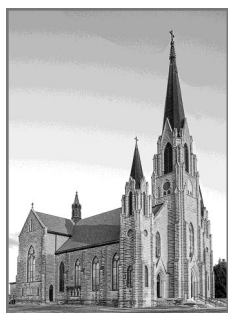
**Doniphan County:** One of the great courthouse square sculptures in the state is in **Troy**. Peter Toth carved an Indian chief with headdress called "Tall Oak" out of a 27-foot bur oak log.

**Douglas County:** The Arch at Haskell Indian Nations University, 23rd and Barker, in **Lawrence** is dedicated to the 415 Haskell students who served in World War I.



**Edwards County:** Want to stand smack dab between San Francisco and New York? Do it at the Midway USA sign at junction of U.S. 56 and U.S. 50 in **Kinsley**. You're 1,561 miles from either city!

**Elk County:** The historic 1893 wooden-plank iron-truss bridge offers a great view atop a water fall in the Elk River. Find it on the northeast side of **Elk Falls**.



**Ellis County:** This tiny unincorporated town, **Pfeiffer**, is home to one of the most magnificent stone churches in Kansas. The 1918 Holy Cross Shrine has the tallest Gothic spire (165 feet) in the state. Though closed for mass since 1993, the community keeps this 8 Wonders of Kansas Architecture open for the public.

**Ellsworth County:** Horsethief Canyon Trail at **Kanopolis** State Park gives a person a breathtaking dose of the red sandstone canyons in the area. Find the Venango section of the state park from K-141.

**Finney County:** Gawk at the Big Pool and then enjoy a walk through Lee Richardson Zoo, 403 S. 4th, **Garden City**. A favorite place is the duck pond waterfall.

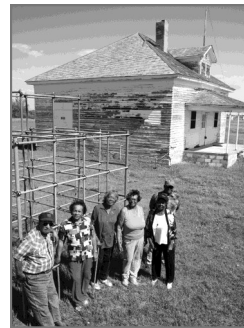
**Ford County:** It's not a well-known spot but the cowboy statue and memorial to oxen at 5th and Spruce in **Dodge City** is a great tribute to the cattle drive days.

**Franklin County:** Beautifully restored, this 1893 George Washburn-designed courthouse at 315 S. Main, **Ottawa**, is distinct inside and out.

**Geary County:** Some of the best tributes to horses are found at **Fort Riley** on Sheridan Avenue. The gravesite of Chief, the last cavalry horse on the government roll, is in front of the Old Trooper Statue. Just beyond is the gut-wrenching Civil War Horse statue.

**Gove County:** Millions of years ago chalk was deposited when Kansas was covered by a seaway. The most famous remnant of that era is Monument Rocks (Chalk Pyramids) located 20 miles south of **Oakley** on U.S. 83, 4 miles east on Jayhawk Rd., 3 miles south, and 1 mile east.

**Graham County:** Exodusters came west after the Civil War and settled **Nicodemus**. Now a national historic site, it's the only surviving town remaining west of the Mississippi established by African Americans. Displays open daily 9 a.m.-4:30 p.m.



**Grant County:** You'll still find some water in the spring by the wagon bed at Wagon Bed Spring, a popular oasis for Santa Fe Trail travelers. From **Ulysses**, go 8 miles south on K-25. Where the road curves, continue straight 3 1/2 miles on Wagon Bed Spring Road, follow signs to the west.

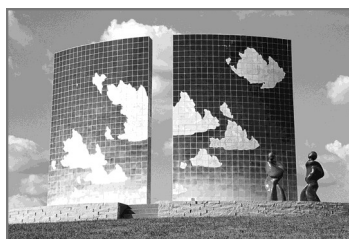
**Gray County:** Read about the first large-scale wind farm in the state at the kiosk 3 miles east of **Montezuma** on U.S. 56. Built in 2001, 170 turbines have been erected. Average wind speed here is 20 m.p.h.

**Greeley County:** Eleven miles west of **Tribune**, then 2 miles north, and 1/2 mile west is the Grand Army of the Republic cemetery plus an interesting monument to brothers who died in a blizzard, with their collie buried next to them. Watch for jack rabbits!

**Greenwood County:** The triple-arch stone 1908 North Branch Otter Creek Bridge is a thing of beauty. Three miles north of U.S. 400 at **Piedmont** on K-Road, then 1 mile west on 50th, and 3/4 mile north.

**Hamilton County:** River Road from **Syracuse** (start south of the Arkansas River bridge on K-27) to **Coolidge** showcases a great example of the Arkansas River Lowlands in western Kansas.

**Harper County:** Pride comes to mind when you see this well cared for George Washburn 1908 courthouse in **Anthony** at Jennings and Steadman.



**Harvey County:** No better place to honor our Kansas sky than at the Blue Sky Sculpture in Centennial Park, 12th and Kansas, **Newton**.

**Haskell County:** Just about any backroad will lead you to rich, fertile, farmland that goes on forever.

**Hodgeman County:** 9 miles west of **Jetmore** on K-156 is the new (2009) HorseThief Canyon Reservoir. The area was a gathering place dating back to the late 1800s. The bluffs and naturally carved out areas were once ideal for horse thieves!

**Jackson County:** This natural roller coaster will leave your stomach up in your throat! At K-16 near **Soldier**, turn north on K-16. Wheeee!



**Jefferson County:** Jefferson County Memorial Park, south of the Law Enforcement Center on U.S. 59 near **Oskaloosa**, honors those who have served.

**Jewell County:** A drive north at the **Formoso** and U.S. 36 junction will take you on a gravel road to a line of hills along White Rock Creek and then to the north side for great Jewell County scenery.

**Johnson County: Overland Park** Arboretum and Botanical Gardens, 1/2 mile west of U.S. 69 and 179th and Antioch, includes thematic gardens, a water garden, and miles of woodland trails.

**Kearny County:** Map lovers will get a thrill in viewing the maps of the Santa Fe Trail inside the Kearny County Museum, **Lakin**. 620.355.7448.

**Kingman County:** A sandy road leads to a lane of towering cottonwoods on the way to the 1933 Kingman County State Lake. Located 8 miles west of **Kingman** on U.S. 54,

**Kiowa County:** The stairs are of a modern variety now but it's still a little nerve-wracking to descend to the bottom of the Big Well in **Greensburg**, 315 S. Sycamore.

**Labette County:** Antietam Circle in the Historic Oakwood Cemetery in **Parsons** with its 1905 red-dome gazebo is impressive. From E. Main, south on Leawood.

**Lane County:** It's a private home and business but the surprising grain bin scale house is found 7 miles west of Dighton to mile marker 79, then 2 miles south to Road 130, and 1/4 mile west. It'll make you smile.



**Leavenworth County:** Leavenworth Landing Park (S. Esplanade behind Riverfront Community Center) in **Leavenworth** has historical signage on this pleasant walkway alongside the mighty Missouri River.

**Lincoln County:** Old South Fork Spillman Creek double-arch stone bridge (8 miles north of K-18 on K-181 near **Sylvan Grove**) served as a meeting place for three different ethnic groups during settlement days.

**Linn County:** The memorial to the Marais des Cygnes martyrs is accompanied with a John Greenleaf Whittier poem. Six free-state men were slain by proslavery ruffians in 1858. Located at the **Trading Post** cemetery. Take K-52 exit off of U.S. 69 and take Valley Road south.



**Logan County:** The double-life-sized bronze of Buffalo Bill pursuing a buffalo is found at 2nd and U.S. 83 at **Oakley**. You can almost imagine the contest that took place in this area that gave Bill his famous nickname.



**Lyon County:** **Emporia** is the Founding City of Veteran's Day and the All Veterans Memorial (S. Cottonwood) is a stand-out dedication.

**Marion County:** Watch for the Santa Fe Trail marker and wagon ruts two and half miles west of **Lost Springs**.

**Marshall County:** Many historic trails crossed through the area and a plaque and replica of a rope ferry tell the story. Go south on U.S. 77 out of **Marysville**. Turn left immediately after you cross the south overpass. Follow this levee road around the trains for 1 1/2 miles. Turn left before you go under the west overpass (U.S. 36), and follow the road into the park.

**McPherson County:** From the observation tower at Maxwell Wildlife Refuge, **Canton**, you'll get a fantastic view of the prairie and maybe you'll see buffalo, too! The tower is a mile beyond the visitor center on Pueblo Road.

**Meade County:** The Grace Brown gravestone in Graceland Cemetery relates the story of the old Jones-Plummer Trail used by freighters, pioneers, and cattle. The cemetery is on the east side of **Meade** at U.S. 54 and U.S. 160.

**Miami County:** The **Paola** town square is rich in history and now a beautiful green space, too. It features a 1913 George Washburn gazebo.

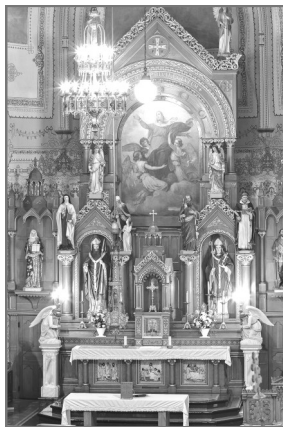
**Mitchell County:** The "Legend of Waconda" sign (2 1/2 miles east of **Cawker City** on U.S. 24 at Waconda Lake) tells about the legendary love story of a beautiful daughter of an Indian chief and a warrior from an enemy tribe.

**Montgomery County:** Riverside Park, Penn and Oak, is a picturesque space in **Independence**. Golden lions welcome you to these flower gardens, carousel, miniature train, miniature golf course, and 1925 zoo.

**Morris County:** In 1928, the D.A.R. dedicated this powerful "Madonna of the Trail" memorial to pioneer mothers. Located on the northeast side of U.S. 56 and K-177 in **Council Grove**.

**Morton County:** See what the pioneers saw from the Point of Rocks in what is now the Cimarron National Grassland (2 miles north of **Elkhart** on K-27). To get to this landmark turn west a half mile north of the Cimarron River bridge off K-27).

**Nemaha County:** Inside St. Mary's Church at **St. Benedict** (1 mile west of **Seneca** on U.S. 36 3 miles north on K-178, then 1/2 mile west) is a jaw-dropping view of this 8 Wonder of Kansas Art.



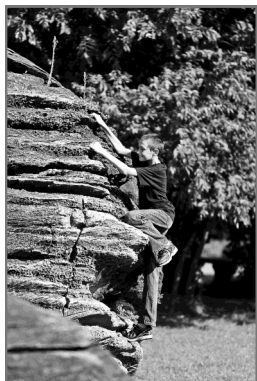
**Neosho County:** This flashy memorial is in honor of Octave Chanute, early aviation pioneer and railroad and bridge engineer. Located in downtown **Chanute** at the depot plaza.

**Ness County:** A simple memorial rock at George Washington Carver's homestead shows the view he had every day. Located 1 mile south of K-96 at **Beeler**.

**Norton County:** You'll get a kick out of the prairie dogs at Prairie Dog State Park at Lake Sebelius four miles west of **Norton**. Find the prairie dog colony south of the park office and over the railroad gorge.

**Osage County:** What's left of the Welsh community of **Arvonnia** is this neat looking 1871 stone school on a little knoll. Go 3 1/2 miles north on Hoch to W. 325 from I-35 exit 148, then 1/2 mile west on W. 325, and north on S. Arvonnia.

**Osborne County:** Head south on **Natoma's** main street and enjoy this dare-to-do-dirt road to **Fairport** in Russell County. You'll cross double-arch stone bridges. Continue south to find a main highway.



**Ottawa County:** How did 200 ancient and giant Dakota sandstone concretions end up in this field near **Minneapolis**? Crawl all over them at Rock City. Cross the Solomon River in town on K-106 and go about 3 miles south. Follow signs on a sandy road to the west.



**Pawnee County:** Take in this nightly water fireworks at the Schnack Memorial Fountain in Schnack Lowrey Park, W. 1st and Carroll in **Larned**.

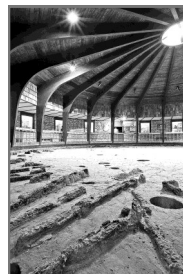
**Phillips County:** Inside the **Kirwin** town square is the attractive 1916 brick city office and fire department.

**Pottawatomie County:** The Oregon Trail went through this nature park 2 miles east of **Belvue** on U.S. 24, then 1/2 mile north on Shoeman Road, and 1/4 mile west on Oregon Trail Road.

**Pratt County:** The B-29 All Veterans Memorial, 3 miles north of **Pratt** on U.S. 281, is located on the site of the Pratt Army Air Field, opened in 1942.

**Rawlins County:** Atwood Lake is on the north side of **Atwood**. It may be almost dry but this lake built in 1926 is still picturesque.

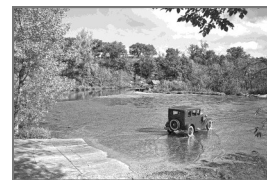
**Reno County:** No where else in the state will you have a view 650 feet underground like you will at the Kansas Underground Salt Museum, 3504 E. Avenue G in **Hutchinson**.



**Republic County:** A Pawnee Indian village from the 1700s once stood here. Learn the story at the Pawnee Indian Village state historic site, **Republic**. 8 miles north of U.S. 36 on K-266.

**Rice County:** Father Padilla's Cross, 4 miles west of **Lyons** on U.S. 56, connects the tragic story between the Quiviran Indians and the explorer Coronado in 1541.

**Riley County:** Pillsbury Crossing is a natural flat rock low-water crossing over Deep Creek. A five-foot-high water-fall is found down river. It is sometimes packed with college kids having a good time. Find it 2 miles south of **Manhattan** on K-177 to Deep Creek Road, 3 3/4 miles east to where the road sharply curves south, continue east 2 1/4 miles on Pillsbury Crossing Road.



**Rooks County:** A couple of miles north of **Palco** on K-18 you'll find the Roosters high school football field located in a picturesque wooded low spot.

**Rush County:** The museum complex in **LaCrosse** (Barbed Wire, Post Rock, Rush County) is situated in pleasant environs and volunteers let you tour on your own.



## WELCOME TO THE EXPLORER FAMILY!

*This is a list of those who have joined since the last newsletter and through January 18. Special thanks to gift givers.*

- #6093 Dr. Karen Willey, Baldwin City  
(Gift from Joan Kastner, Wichita)
- #6094 Lucy Briden, Kansas City, MO  
(Gift from Carol Davis & Janette Martinez)
- #6095 Macie Smith, Hoyt
- #6096 Ann Owens, Eskridge (Gift from  
#1008 John Liston, New Castle,  
WY)
- #6097 Cynthia Rhodes, Whitewater
- #6098 James Daft, Shawnee
- #6099 Travis & Stacy Barnes,  
Greensburg
- #6100 Elyssa Jackson, Iola
- #6101 Shelley Culver, Benton
- #6102 Wilma Booth, Burlingame
- #6103 Colleen Hastings, Dodge City
- #6104 Nancy Taylor, Topeka
- #6105 Bill Herring, Overland Park
- #6106 Scott & Tess Berroth, Alma
- #6107 Mike & Linda Stanfill, Topeka
- #6108 Dawn Van Horn, Junction City
- #6109 Teresa Mandevill, Bluff City
- #6110 Elizabeth Hendricks, Howard
- #6111 Pam Scheirer, Topeka
- #6112 Mike, Valerie, Brianna, Reagan,  
& Hannah Bosch, Baldwin City

## EXPLORER TRACKINGS!

KE #375 Nancy Nolte found these beauty shops with intriguing names: 1) "Curl Up & Dye" in **Glen Elder** and 2) "Watch Your Head" in **Alta Vista**, located in a basement!

KE's #3183 Dave & Irene Norman said the Last Chance Express Grill in **Nickerson** serves up a great smothered chili cheeseburger!

KE #4108 Dave Azwell highly recommends Caffe Thyme in **Lyndon** (1715 Topeka) for their fresh salad bar, but also for their great fries. 785.828.4165.

## QUEST REPORTS!

We have some exciting Quest updates to report in the next newsletter. If you have chosen a quest, let Marci know at [marci@kansassampler.org](mailto:marci@kansassampler.org).

**THANK YOU!** Writer Marci wants to say thanks to the newsletter team of WenDee (design), Kim and Mom (membership), and Martha (proofing)!

## THANKS RENEWERS!

*Each one of you is important to us.  
(This is a list of those who have renewed between the last newsletter and Jan. 15)*

- #99 Karen Sturm, Caldwell
- #109 Royce & Marge Reeves-Guhr,  
Independence
- #131 LaVeda Cross, Lewis
- #186 Russell Phalen, Osborne
- #219 Marce Brewer, Beaumont
- #220 Rosetta Bartels, Inman
- #339 Ellen Neufeld, Inman
- #348 Connie & Charles Peckham, Atwood
- #358 Helen Ericson, Emporia
- #376 Conductor & Marilyn Sommers,  
Silver Lake
- #378 Clark & Lynda Huffer, Glasco
- #414 Howard & Ellen Duncan,  
Lecompton
- #429 Dee & Harold Metz, Washington
- #549 John & Susan Howell, Wichita
- #596 Sharon Anderson, Lindsborg
- #598 Gary & Kay Nelson, Wichita
- #696 Lowell & Wanda Chambers,  
Emporia
- #706 Adolyn Bartels, Inman
- #737 Mert Curtis, St. John
- #752 Bill & Linda Richter, Manhattan
- #940 Craig & Kelle Goodman,  
Ness City
- #1008 John Liston, New Castle, WY
- #1033 Bill & Susan Bunyan, Dodge City
- #1051 Paula Phillips, Lawrence
- #1053 Wendell Shaw, Ridgecrest, CA
- #1165 Albert Hamscher, Manhattan
- #1186 Jo Ann Sheldon, Arkansas City
- #1195 Donna Long, Scott City
- #1499 Jean Buoy, Concordia
- #1552 Lisa Brumbaugh, Emporia
- #1599 Madlyn & Dale Swenson, Concordia
- #1602 William Small, Hutchinson
- #1774 Tom Eddy, Emporia
- #1835 Carl & Mary Sue Druart, Chanute
- #1861 Brian, Robin, Melissa & Kelsey  
Pressnall, BelAire
- #1976 Jeff Mercer, Lawrence
- #2026 Mary Lou Pickler, Ulysses
- #2037 Marilyn & Gary Jones, Peabody
- #2051 Evelyn & Bob Neier, Wichita
- #2061 Ellery Robertson, Humboldt
- #2136 Roger & Leandra Baker, Wichita
- #2240 Bruce Hogle, Overland Park
- #2268 Lee Wright & Alice Eberhart,  
Topeka
- #2323 Bill Miller, Topeka
- #2354 Leo Griess, Sutton, NE
- #2388 Patricia & David Flores,  
Northridge, CA
- #2480 Kem McHugh, Topeka
- #2499 Tony Witt, Russell
- #2664 Steve Paige, Topeka
- #2764 Mike, Kathleen & Gretchen Hess,  
Stillwell
- #2781 James & Leila Smith, Garnett
- #2786 Dave Welfelt, Newton
- #2809 Janice Carter, Overland Park
- #3142 Jim & Eileen Marshall, Prairie  
Village
- #3183 David & Irene Norman, Nickerson
- #3254 Joe Kyner, Mission Hills
- #3260 Ed & Marilyn Armstrong, Mulvane
- #3301 Carol McDowell & John Bottenberg  
Topeka
- #3315 Patsy Terrell, Hutchinson
- #3320 Mike, Karen, Leanna, & Nick  
Larmer, Colby
- #3387 Stephanie & Scott Knebel, Derby
- #3469 Kim Fisher, Wichita
- #3489 Mary Alden Clarke, Topeka
- #3499 Ralph Rust, Andover
- #3566 Bill & Marilyn Bunyan, Manhattan
- #3599 BJ & Jonell Davies, Wichita
- #3606 Melvin Yarnell, Osborne
- #3657 Jeanne & Dick Trupp, Topeka
- #3716 Wava Duell, Goodland
- #3718 Norman Pihl, Salina
- #3753 Dean & Shirley Taylor, Manhattan
- #3776 Jim, Diane & Ryan Niehoff,  
Baldwin City
- #3975 Neil & Janet Weatherhogg, Topeka
- #4001 Kathy Yarrow, Wakefield
- #4108 Dave Azwell, Osage City
- #4160 Chuck & Barb Depew, Wamego
- #4323 Richard Campbell, Thornton, CO
- #4565 Eric Montgomery, Topeka
- #4774 Concha Walker, Wichita
- #4831 Delmer & Deb Harris, Olathe
- #4866 Bill Wilson, Claflin
- #4878 Chris & Cristina Petty, Hill City
- #4898 Rosanna Bauman, Garnett
- #4953 Stephanie Wacker, Wichita
- #5028 Dallas & Nancy Nading, Concordia
- #5127 William & Jean Cook, Stark
- #5281 Dick Siemer & Denise O'Leary,  
Wichita
- #5353 Paula, Josephine & Teresa  
Hernandez, Salina
- #5374 Stanley Juhnke, Hutchinson
- #5436 Florence & Howard Loomis, Pratt
- #5454 Debbie & Gary Smith, Neodesha
- #5549 Lou & Jim Clennan, El Dorado
- #5597 Arle Ann Lamberd, Scranton
- #5612 Ed & Marta Howe, Eskridge
- #5619 Bill Shaffer, Drexel, MO
- #5625 Bill & Jeanne Leonard, Overland  
Park
- #5629 Kate & Tom Pott, Wichita
- #5640 Marilyn & Bob Graham, Fredonia
- #5641 Jim & Sharon Jackson, Neodesha
- #5646 David, Lori, Addie & Clara Hanson,  
Shawnee
- #5758 Deb Scott, Asheville, NC
- #5863 Jim Schramm, Marysville
- #5871 Helen Beashore, Edwardsville
- #5888 Dorlan Bales & Kathryn Damiano,  
Wichita
- #5890 Carol Widmer, Wichita
- #5892 LeAnn Cox, Hutchinson
- #5894 Kerry Schuckman, Hays
- #5904 Connie Lee, Wichita
- #5905 Dick & Mary Luman, Overland Park

**The 2013 Kansas Sampler Festival  
is May 4-5 in Liberal's Light Park!  
[Kansassamplerfestival.com](http://Kansassamplerfestival.com)**



# Kansas Explorers Club Membership and Renewal Form

Explorers Name \_\_\_\_\_ Names for family membership: \_\_\_\_\_

First-timer \_\_\_\_; Renewal \_\_\_\_ Phone \_\_\_\_\_ E-mail \_\_\_\_\_

Address \_\_\_\_\_ City \_\_\_\_\_ State \_\_\_\_ Zip \_\_\_\_\_

Gift membership to: \_\_\_\_\_ Mailing address \_\_\_\_\_

This is a gift from: \_\_\_\_\_ (Gift card will be enclosed).

Annual dues: Individual membership \$18.61; family \$30. (Family membership prior to #881 is grandfathered in at \$18.61)

Check is enclosed \_\_\_\_ or Visa or Master Card # \_\_\_\_\_ Exp. date \_\_\_\_\_

Name on card \_\_\_\_\_

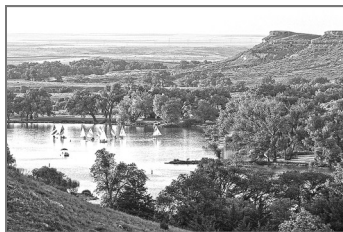
I'd like to add a donation for the work of the Kansas Sampler Foundation \_\_\_\_\_. My payment is for \_\_\_\_ years of membership.

Send to: Kansas Explorers Club, 978 Arapaho Rd., Inman, KS 67546 You can also renew or join online at [explorekansas.org](http://explorekansas.org).

**Russell County:** Rocktown Trail at **Lake Wilson** provides a tremendous view of the Smoky Hills and you'll find sandstone formations at the trail overlook. The 3-mile trail starts at Lucas Park at Wilson Lake.

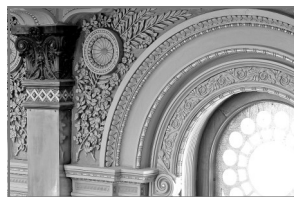
**Saline County:** A spectacular hilltop view of the Smoky Valley below, a WPA "castle" adds to the charm. Located 3 miles north of **Lindsborg** on 13th Avenue, then 1 mile west on Coronado Heights Road.

**Scott County:** Stunning Lake Scott State Park is in a valley carved into the steep bluffs of the Ogallala Formation, a water-bearing formation. Located 15 miles north of **Scott City** on U.S. 83, then 3 miles northwest on K-95.



**Sedgwick County:** The 44-foot steel *Keeper of the Plains*, a gift from artist Blackbear Bosin, sits atop a 30-foot pedestal creating a powerful presence at 650 N. Seneca, **Wichita**. A ring of fire burns nightly.

**Seward County:** The Mighty Samson of the Cimarron between **Liberal** and **Kismet** on U.S. 54 was considered an engineering marvel when built in 1938.

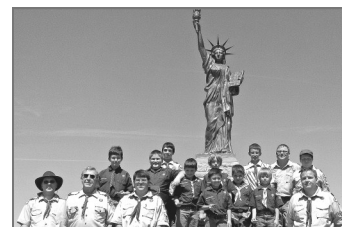


**Shawnee County:** The steps of our State Capitol (10th and Jackson, **Topeka**) is a place all Kansans should stand! Go on in and find one of the most beautiful interiors in the country.

**Sheridan County:** Stand on the porch of Cottonwood Ranch state historic site, a sheep ranch home that dates back to 1885, made of beautiful stone blocks of different color. Located on U.S. 24 at the Sheridan and Graham county line at **Studley**.



**Sherman County:** At Cherry and U.S. 24 in **Goodland** find this enlarged reproduction of one of Vincent Van Gogh's sunflower paintings painted by Cameron Cross.



**Smith County:** The Statue of Liberty replica roadside park between **Gaylord** and **Harlan** offers one of the most beautiful views of the river valley, cropland and open sky.

**Stafford County:** A triple-decker Victorian fountain is the focal point of this beautiful park square in downtown **St. John**.

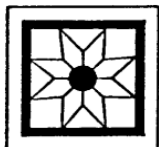
**Stanton County:** From **Manter** go west or north to see a typical High Plains ecosystem: sage prairie, short grass prairie, and yucca.

**Stevens County:** The natural gas well at Stevens County Gas and Historical Museum, 905 S. Adams, in **Hugoton** recognizes the rich natural resource in the area.



Street add to the rich cattle town story.

**Sumner County:** An iron cut-out arch in downtown **Caldwell** depicts the town's history. Nineteen historical markers on Main



## THE EXPLORER #97

c/o Kansas Sampler Foundation  
978 Arapaho Road  
Inman, Kansas 67546

Non-profit organization  
U.S. Postage  
PAID  
Permit No. 24  
Inman, KS 67546

Return Service Requested

Use a credit card to renew or join  
online at [explorekansas.org](http://explorekansas.org).

**IF IT'S TIME TO RENEW THERE WILL BE A NOTICE ABOVE  
YOUR NAME ON THE ADDRESS LABEL.**

**Thomas County:** Charlie Norton's bronze of a prairie woman and her baby welcomes you to the 1906 Romanesque Revival Thomas County Courthouse in **Colby** at 300 N. Court.



**Trego County:** The south side of Cedar Bluff State Park is where you'll find the cedar-lined, 100-foot-tall limestone bluffs. 13 miles south of I-70 at **Ogallah** on K-147.



**Wallace County:** Mount Sunflower was officially named the highest point in Kansas (4,039 feet above sea level) in 1961. Located 3 miles west of **Weskan** on U.S. 40, then 11 miles north, 1 mile west.

**Wabaunsee County:** Mount Mitchell is a link to the Bleeding Kansas story and a

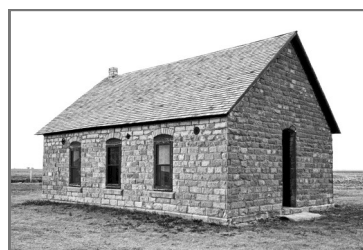
brass plaque at the top commemorates the Beecher Bible and Rifle Colony. Located 3 1/2 miles south of **Wamego**, then east on Mount Mitchell Road.



**Washington County:** Right here at the 1856 Surveyor's Monument was the beginning point for all land surveys in Kansas, Nebraska, much of Colorado and Wyoming, and a small part of South Dakota. Located 1/2 mile west of **Mahaska** on 29th, then 1 mile north on Meridian.

## FIND EACH COUNTY HERE

Cheyenne	Rawlins	Decatur	Norton	Phillips	Smith	Jewell	Republic	Washington	Marshall	Nemaha	Brown	Doniphan	Leavenworth
Sherman	Thomas	Sheridan	Graham	Rooks	Osborne	Mitchell	Cloud	Clay	Pottawatomie	Jack-	Jefferson	Atchison	Wyandotte
Wallace	Logan	Gove	Trego	Ellis	Russell	Lincoln	Ottawa	Saline	Dickinson	Geary	Wabaunsee	Shawnee	Douglas
Greeley	Wichita	Scott	Lane	Ness	Rush	Barton	Ellsworth	Rice	McPherson	Marion	Chase	Lyon	Franklin
Hamilton	Kearney	Finney	Hodgeman	Pawnee	Edwards	Stafford	Reno	Harvey	Cherokee	Woods	Allen	Bourbon	Linn
Stan-	Grant	Haskell	Gray	Ford	Kiowa	Pratt	Kingman	Sedgwick	Butler	Greenwood	Wilson	Neesho	Crawford
Mor-	Stevens	Seward	Meade	Clark	Comanche	Barber	Harper	Sumner	Cowley	Chautauqua	Montgomery	LaBette	Cherokee



## Wichita County:

Except for the cemetery and farmsteads, the stone Beulah Church, built in 1904 for the Free Methodists, adds a break to the horizon. 11 miles

north, 3 miles east, 3/4 mile north of **Leoti**.

**Wilson County:** The low-water bridge and old mill dam take you back to a previous time. 1 mile south of **Fredonia** on K-96, then 1 mile west. Drive under the railroad trestle and beyond.

**Woodson County:** The one-mile Ancient Oaks Trail, Cross Timbers State Park at Toronto Reservoir south of **Toronto**, is fun, educational, and it's a Kansas you don't usually see.



**Wyandotte County:** Fashioned after the Arc de Triomphe in Paris, this 1923 memorial to those from the area who served in World War I stands on the crest of a hill overlooking the **Kansas City** skyline. Located at 35th and Booth in Kansas City.